

INTERCULTURAL LEADERSHIP SUMMER COURSE

20 JANUARY – 7 FEBRUARY 2020

VICTORIA
UNIVERSITY
WELLINGTON

TE WHARE WĀNANGA
O TE ŪPOKO O TE IKA A MĀUI



NEW ZEALAND



EXPLORE NEW ZEALAND'S BEAUTIFUL LANDSCAPES AND VIBRANT CULTURE WHILE EXPERIENCING A GLOBAL AND TRANSFORMATIVE ACADEMIC ADVENTURE.

The Intercultural Leadership Summer Course (ILSC) is a three-week programme designed to advance your international knowledge and intercultural awareness. You will learn about international leadership, cross-cultural communication, sustainability, and global connectedness.

You will think creatively about global challenges through seminars, reflective journaling, hands-on workshops, group work, debating, and social activities. The programme ends with a model APEC forum run by the New Zealand UN Youth.

The ILSC is an invaluable opportunity if you want to gain international experience or if you are planning to pursue graduate or professional training outside of China.



**SPEND YOUR BREAK IN NEW ZEALAND'S CREATIVE
AND CULTURAL CAPITAL CITY**



BE INSPIRED TO THINK GLOBALLY



**EXPLORE NEW ZEALAND'S NATURAL LANDSCAPE
AND MĀORI CULTURE**

**CAPITAL
THINKING.
GLOBALLY
MINDED.**
MAI I TE IHO KI TE PAE



COURSE HIGHLIGHTS

Enhance your global competency

Attend seminars and workshops on global issues, sustainability, and cross-cultural communication.

Capital city networking

Meet and engage with industry through unique opportunities.

Field trip

Visit Rotorua, Taupo, and Matamata on a weekend visit.

Highlights include:

- a traditional Māori meal and show at the Mitai Māori Village
- a tour of the Hobbiton movie set, used for The Lord of the Rings and The Hobbit films
- a visit to a working farm followed by adrenalin activities at Agroventures
- a relaxing soak in one of Rotorua's volcanic hot springs.

Meet friends from New Zealand

Connect with local students who will participate alongside you in some of the academic seminars and act as your guide through Kiwi culture in a variety of social events, such as:

- exploring unique attractions around Wellington on student led Capital Safaris
- taking a fun look at Kiwi culture in the movies at a film night
- celebrating the Spring Festival with friends at a homemade Chinese banquet.

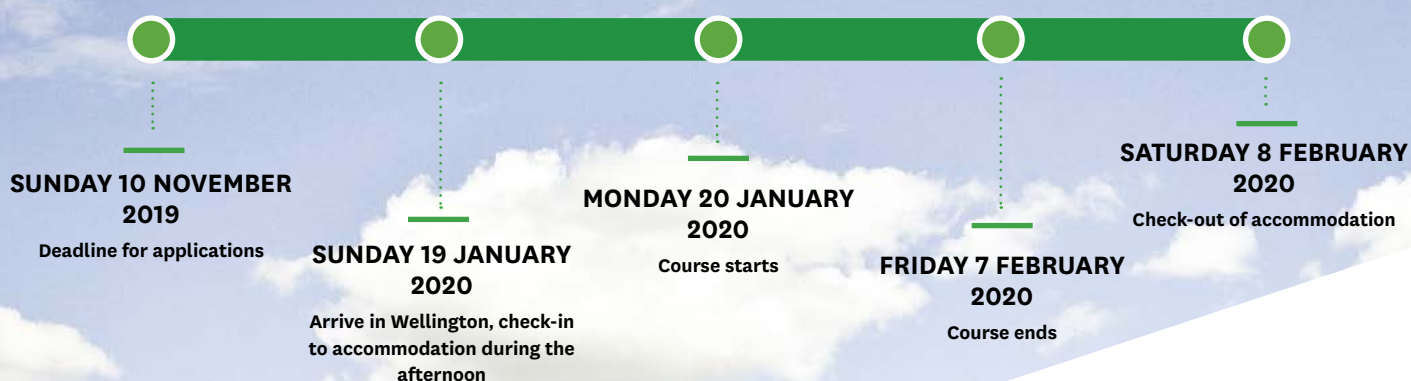


“This programme is challenging but meaningful. It has really broadened my horizons.”

“The ILSC exceeded my expectations. I got to practice my English-speaking skills every day. Not only did people not laugh at me, they encouraged me to speak more. I made great friends with the local volunteers.”



KEY DATES



COURSE COSTS

The costs of the three-week programme are outlined below in New Zealand dollars (including GST):

TOTAL costs per person* NZ\$ 4750

Included in the fees	Not included in the fees
Accommodation (include three meals per day)	International airfare to and from Wellington
A weekend trip to Rotorua and the Hobbiton Movie Set	Travel visa costs
Programme and materials	Entertainment: approximately NZ\$25 per week
Seminars, workshops and creative component	Personal spending (snacks, toiletries, international phone calls, etc.): approximately NZ\$30 per week
Airport transfers	
Public transport in and around Wellington	
Local sightseeing and activities	
Medical and travel insurance (Studentsafe package)	

*These costs are accurate at the time of issue of this brochure. Any increases beyond the control of the University will be passed on directly to students.

SELECTION CRITERIA

You will be invited to participate in the ILSC by your home institution if you meet the following criteria:

- overall academic merit;
- intermediate knowledge of English (minimum score equivalent to IELTS 5.5 / TOEFL 525 / CET-4 (大学英语4 级); and
- interest in enhancing your global awareness (assessed through an essay).

“My university has a lot of study abroad programmes. I chose this programme and had no regrets. The most useful course for me is the Critical Thinking workshop, it opened my eyes.”

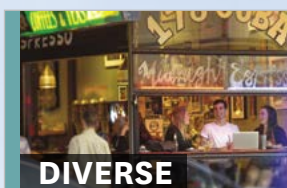


WELLINGTON IS AN IDEAL PLACE TO STUDY



CREATIVE

Wellington was named New Zealand's most creative city. It is home to Weta Workshop, Te Papa, the World of Wearable Arts, the New Zealand Festival of the Arts and more. *Infometrics, 2017*



DIVERSE

25% of people who live in Wellington were born outside of New Zealand, making it a diverse and welcoming city. *Statistics New Zealand, 2015*



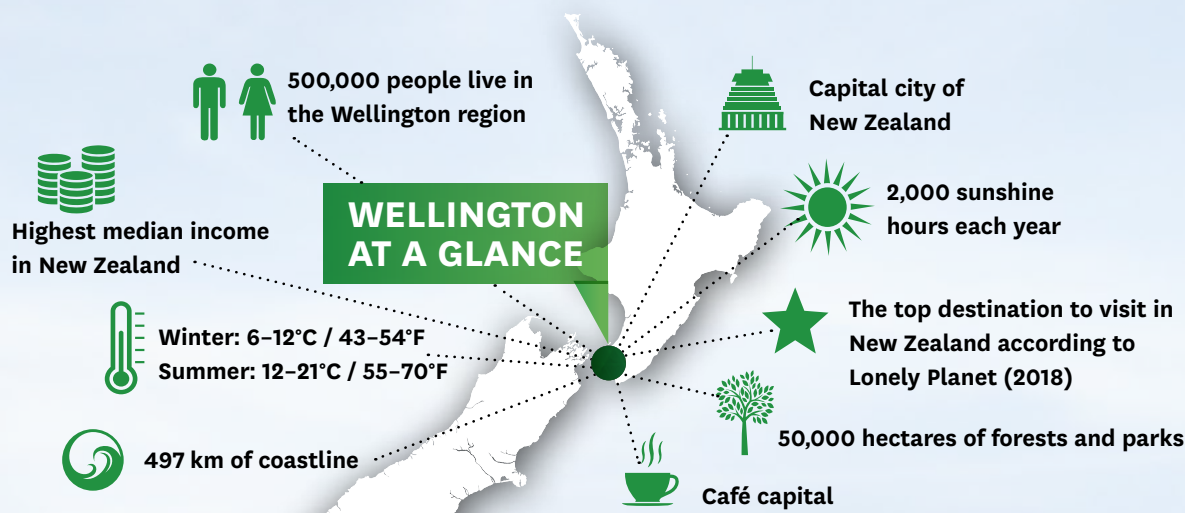
HIGH TECH

Wellington is the tech capital of New Zealand, with more web-based and digital technology companies than anywhere else in the country. *New Zealand Trade and Enterprise, 2016*



SAFE

Wellington is a safe and friendly place to live—it's currently ranked the 16th safest city in the world. *The Economist Safe Cities Index, 2017*



ABOUT VICTORIA UNIVERSITY OF WELLINGTON

TOP 1% of the world's universities in 17 subject areas*

TOP 2% of the world's 18,000 universities**

*QS World University Rankings by Subject, 2018



**QS World University Rankings, 2018

3,500 of our **22,000** students are international students



NEW ZEALAND is ranked **best country in the world** for Educating for the Future***



***The Economist Intelligence Unit, 2017

CONTACT US



Victoria International

✉ VI.IP-team@vuw.ac.nz

☎ +64 4 463 5350

📍 Postal address: PO Box 600, Wellington 6140, New Zealand.

🌐 www.victoria.ac.nz/international

* 2019 Performance-Based Research Funding (PBFR) Quality Evaluation by the New Zealand Tertiary Education Commission

** QS World University Rankings by Subject 2019

*** QS World University Rankings 2019